

Fayette County

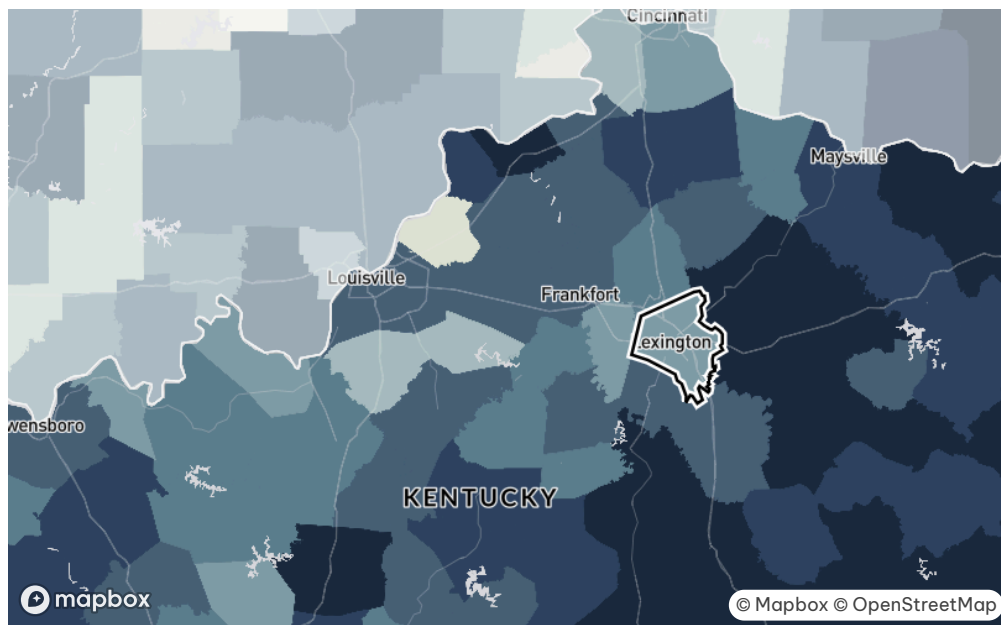
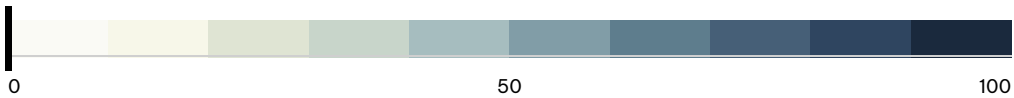
Kentucky

Overall Climate Vulnerability

Score combining environmental, social, economic, and infrastructure effects on neighborhood-level stability.

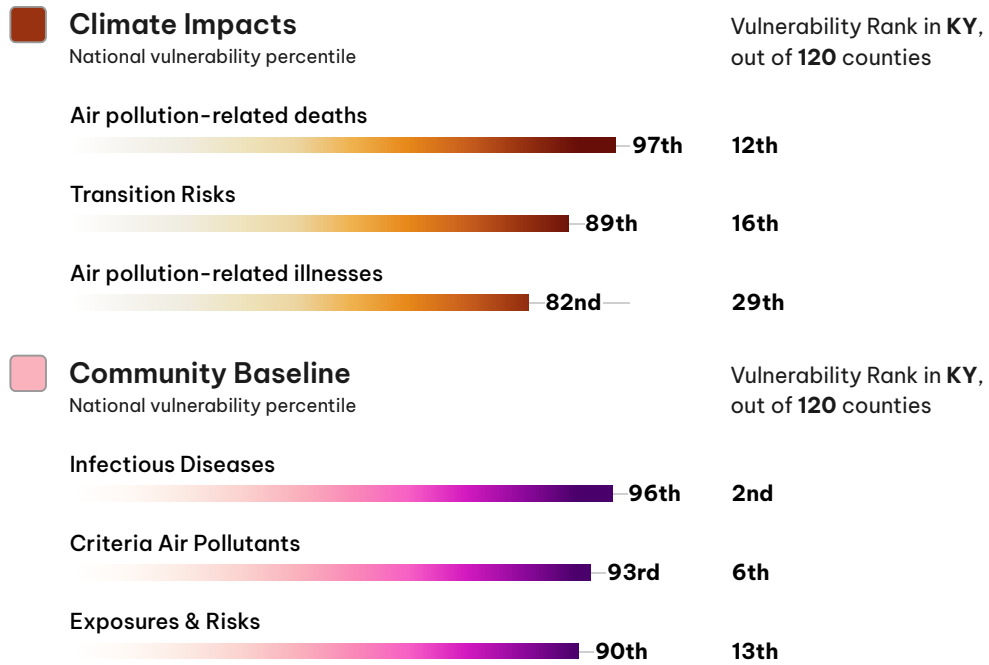
Ranks **109** out of **120 Counties** in **Kentucky**

average vulnerability **58th** national vulnerability percentile



DEMOGRAPHIC PROFILE	total	percent
Population	288,045	
Race: White	222,371	77.2%
Race: Black	41,168	14.3%
Race: Asian	9,427	3.3%
Race: Other	8,303	2.9%
Race: Two+	5,961	2.1%
Race: Native	587	0.2%
Race: Islander	228	0.1%
Age: 65 Years And Over	29,668	10.3%

Top Drivers of Overall Climate Vulnerability



Composition of Overall Climate Vulnerability

Climate Impacts

How a community is vulnerable to environmental and economic disruptions.

This county ranks **79** out of **120 Counties** in **Kentucky**

highest vulnerability **83rd** national vulnerability percentile



Health

Expected changes in community health resulting from warming climate.

94th national vulnerability percentile



Social & Economic

Social and economic costs and impacts associated with change in climate.

54th national vulnerability percentile



Extreme Events

Historical and projected extreme weather event occurrences.

31st national vulnerability percentile

Community Baseline

The long-standing inequities shaping resilience to climate impacts.

This county ranks **114** out of **120 Counties** in **Kentucky**

average vulnerability **45th** national vulnerability percentile



Environment

Environmental factors that pose a threat to community's well-being.

93rd national vulnerability percentile



Health

Factors reflecting baseline or overall state of population health.

35th national vulnerability percentile



Infrastructure

Essential structures, services, resources that affect community resilience.

32nd national vulnerability percentile



Social & Economic

Social and economic stressors that impact community resilience.

21st national vulnerability percentile