

# Scott County

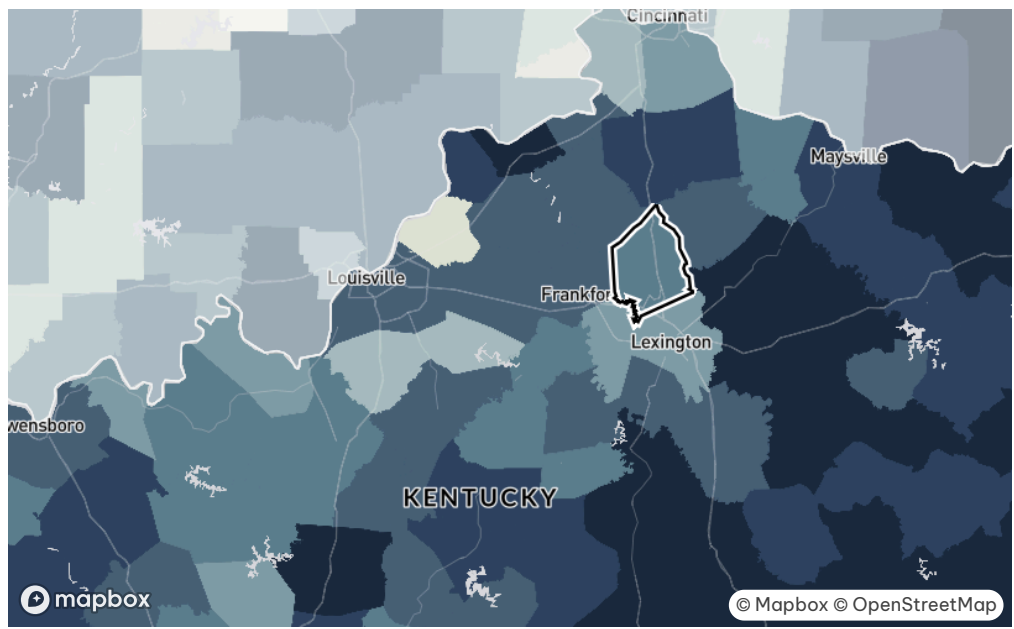
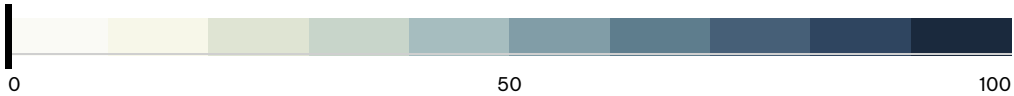
Kentucky

## Overall Climate Vulnerability

Score combining environmental, social, economic, and infrastructure effects on neighborhood-level stability.

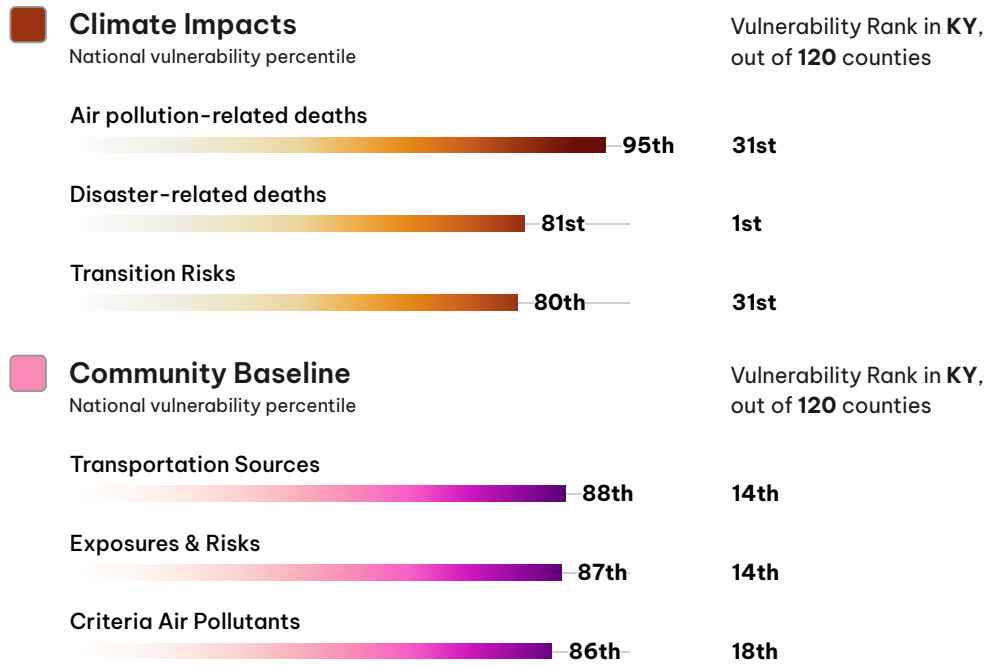
Ranks **98** out of **120 Counties** in **Kentucky**

**higher vulnerability** **67th** national vulnerability percentile



DEMOGRAPHIC PROFILE	total	percent
Population	44,868	
Race: White	40,758	90.8%
Race: Black	2,589	5.8%
Race: Two+	614	1.4%
Race: Other	402	0.9%
Race: Asian	376	0.8%
Race: Native	129	0.3%
Race: Islander	0	0%
Age: 65 Years And Over	4,038	9%

# Top Drivers of Overall Climate Vulnerability



# Composition of Overall Climate Vulnerability

## Climate Impacts

How a community is vulnerable to environmental and economic disruptions.

This county ranks **53** out of **120 Counties** in **Kentucky**

**highest vulnerability** **89th** national vulnerability percentile



### Health

Expected changes in community health resulting from warming climate.

**85th** national vulnerability percentile



### Social & Economic

Social and economic costs and impacts associated with change in climate.

**78th** national vulnerability percentile



### Extreme Events

Historical and projected extreme weather event occurrences.

**39th** national vulnerability percentile

## Community Baseline

The long-standing inequities shaping resilience to climate impacts.

This county ranks **108** out of **120 Counties** in **Kentucky**

**average vulnerability** **53rd** national vulnerability percentile



### Environment

Environmental factors that pose a threat to community's well-being.

**91st** national vulnerability percentile



### Infrastructure

Essential structures, services, resources that affect community resilience.

**50th** national vulnerability percentile



### Health

Factors reflecting baseline or overall state of population health.

**42nd** national vulnerability percentile



### Social & Economic

Social and economic stressors that impact community resilience.

**24th** national vulnerability percentile